



OAKFIELD



Meadow Place, Uckfield
Asking Price £425,000



SUMMARY

Tucked away on an enviable private road in the heart of Uckfield, this characterful early Victorian home is a rare find. Originally built as brickworkers' cottages serving the nearby quarry, this sympathetically extended residence now offers the perfect blend of period charm and modern comfort.

Just a short walk from Uckfield's thriving town centre and mainline station, this home enjoys both privacy and convenience in equal measure.

From the moment you arrive, the property's generous corner plot and abundant off-street parking make a striking first impression. The possibility for further extension or reconfiguration (subject to the usual planning permissions) adds exciting potential for the future.

Step through the front door into a welcoming entrance hall, where the staircase rises to the first floor. The ground floor boasts a bright and airy lounge with high ceilings and a charming feature fireplace — an inviting space to relax and unwind after a long day.

The generous formal dining room flows beautifully into the contemporary kitchen, creating a sociable layout ideal for entertaining friends and family.

A bright family bathroom completes the ground floor, all thoughtfully designed for modern living while retaining the period feel.



Upstairs, the home offers three well-proportioned bedrooms, each benefitting from original high ceilings that enhance the sense of space and light.

Outside, the substantial garden wraps around the side and rear of the house, currently terraced and landscaped to offer multiple seating areas.

This versatile space could easily be remodelled to suit a range of lifestyles and is the perfect backdrop for summer gatherings and barbecues. At the far end of the garden, you'll find a useful workshop and additional parking – ideal for hobbyists or those needing extra storage.

This is a rare opportunity to own a piece of Ridgewood's rich history — a home full of character, nestled in a desirable location, with room to grow and personalise.



Sitting Room

11'8 x 11'8

Dining Room

15'11 x 9'7

Kitchen

9'6 x 7'10

Garage

16'1 x 10'5

Bedroom

16'1 x 12'10

Bedroom

12'3 x 7'2

Bedroom

9'5 x 8'1

Council Tax Band - C £2,319 per annum













INFORMATION

Tenure

Freehold

Local Authority

Wealden District Council

Council Tax Band

C

Opening Hours

Monday to Friday	9.00am - 5.30pm
Saturday	9.00am - 4.00pm

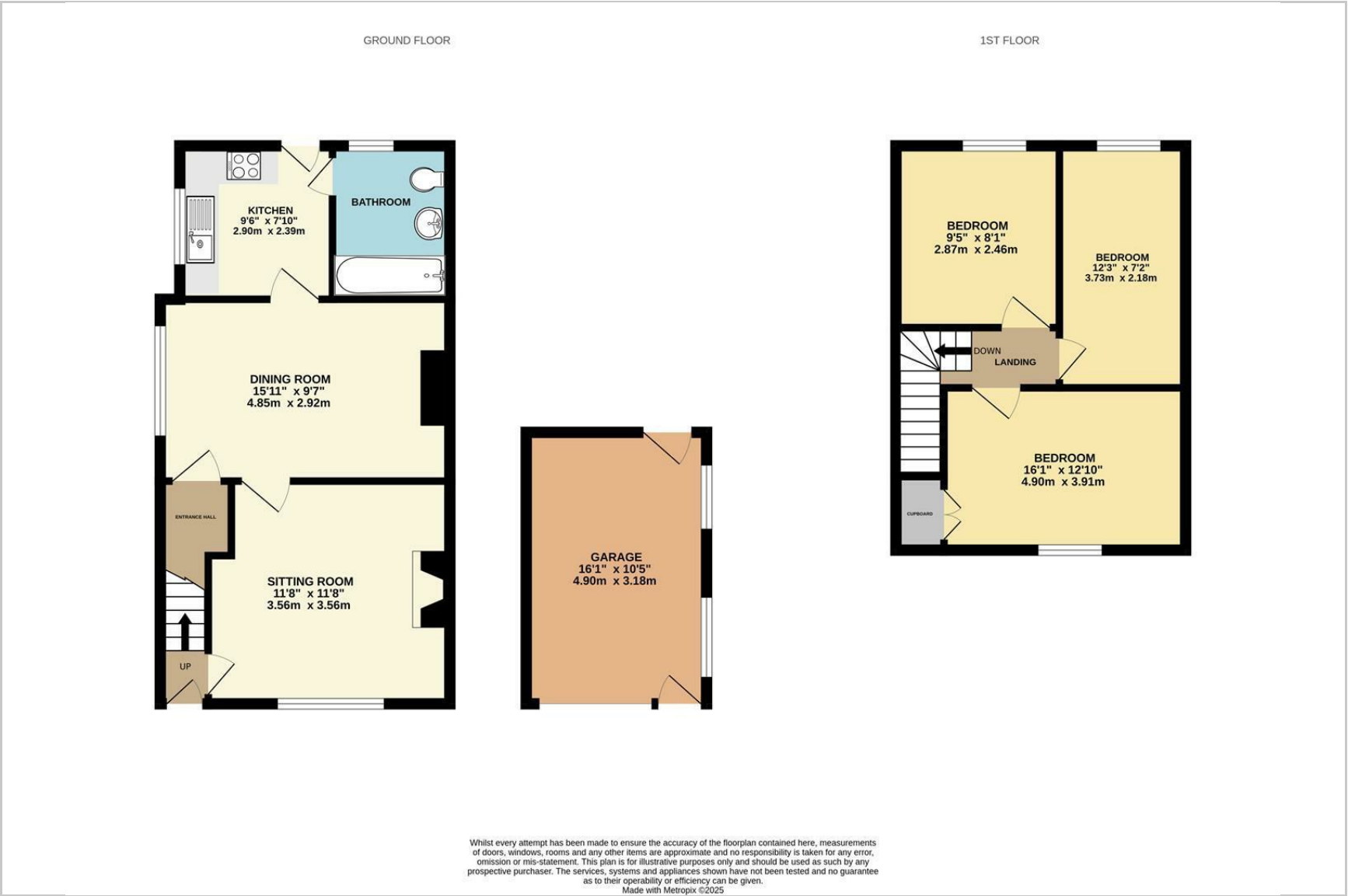
Viewings

Please contact us on 01825 762132 if you wish to arrange a viewing appointment for this property or require further information.

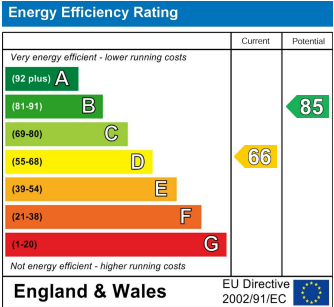
Area Map



Floorplan



Energy Efficiency Graph



These particulars, whilst believed to be accurate are set out as a general outline only for guidance and do not constitute any part of an offer or contract. Intending purchasers should not rely on them as statements of representation of fact, but must satisfy themselves by inspection or otherwise as to their accuracy. No person in this firms employment has the authority to make or give any representation or warranty in respect of the property.